 We at **AniCon** regard ourselves as a competent and reliable partner in the field of animal health and food safety.

Diagnostic Services (Accreditation ISO 17025)

- Pathology
- Cultural bacteriology
- Cultural virology
- Serology
- PCR and sequencing

Diagnostic Kits

- Kylt® Real-Time (RT-) PCR-Kits


Custom-Made-Vaccines for Livestock

- Poultry
- Swine
- Cattle
- Sheep/Goats
- Fish

Food Safety (Accreditation ISO 17025)

Examination of food/-of animal feed/drinking water/-for animals

- Microbiological / chemical analysis
- Molecular / Immunological analysis
- Histology
- Quality Management & Consulting

 **AniCon** ist Ihr kompetenter und verlässlicher Partner in den Bereichen Tiergesundheit und Lebensmittelsicherheit.

Diagnostische Dienstleistungen (Akkreditierung ISO 17025)

- Pathologie
- Kulturelle Bakteriologie
- Kulturelle Virologie
- Serologie
- PCR und Sequenzierung

In Vitro Diagnostika

- Kylt® Real-Time (RT-) PCR-Kits

Bestandsspezifische Impfstoffe für Nutztiere

- Geflügel
- Schwein
- Rind
- Schaf/Ziege
- Fisch

Lebensmittelsicherheit (Akkreditierung ISO 17025)

Prüfung von Lebens-/Futtermitteln, Trink-/Tränkwasser

- Mikrobiologische / Chemische Prüfungen
- Molekularbiologische / Immunologische Prüfungen
- Histologie
- Qualitätsmanagement & Beratung
- Gegengutachten

 **AniCon** es un colaborador competente y fiable en los sectores de salud animal y seguridad alimentaria.

Servicios de diagnóstico (Acreditación ISO 17025)

- Patología
- Cultivos bacteriológicos
- Cultivos virales
- Serología
- PCR y secuenciación

Diagnósticos in vitro

- Kylt® Real-Time (RT-) PCR-Kits

Vacunaciones específicas para animales destinados al consumo

- Aves
- Cerdos
- Vacas
- Oveja/Cabra
- Peces

Seguridad alimentaria (Acreditación ISO 17025)

Pruebas de productos alimenticios/piensos, agua potable

- Pruebas microbiológicas / químicas
- Pruebas de biología molecular / inmunológicas
- Histología
- Gestión y asesoramiento de calidad

 **AniCon** est votre partenaire compétent et fiable dans les domaines de la santé animale et de la sécurité des produits alimentaires.

Services de diagnostic (Accréditation ISO 17025)

- Pathologie
- Bactériologie de culture
- Virologie de culture
- Sérologie
- PCR et Séquençage

Diagnostics in vitro

- Kylt® Real-Time (RT-) PCR-Kits

Vaccins spécifiques à chaque élevage pour les animaux d'exploitation

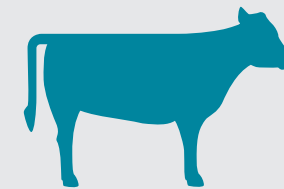
- Volaille
- Cochon
- Bovin
- Mouton/Chèvre
- Poisson

Sécurité des Produits Alimentaires (Accréditation ISO 17025)

Test des produits alimentaires, de l'eau pour consommation humaine / animale

- Tests microbiologiques / chimiques
- Tests de biologie moléculaire / immunologiques
- Histologie
- Gestion de la qualité et service de conseil

R-4.1, 2018.10.01. | Rev001



DIAGNOSTICS AND CUSTOM MADE VACCINES

• FOR CATTLE •



AniCon

AniCon Labor GmbH

Muehlenstr 13 | 49685 Hoeltinghausen | Germany
Phone +49 44 73 94 38-0 | info@anicon.eu | www.anicon.eu

AniCon

CMV – CUSTOM MADE VACCINES

improving health, reducing antibiotic treatments

Vaccinations are essential for professional cattle-keeping since they maintain and enrich the health status of the animals.

Custom made vaccines are specific options to help prevent diseases in cattle and can be an excellent complement to licensed products. Using custom made vaccines is an effective solution when no commercially licensed product is available for a specific pathogen strain or serotype and are a favourable alternative to using antibiotics.

Custom made vaccines stimulate animals to form an effective immune protection.

Herd conditions may change constantly because a number of pathogens are able to mutate and change their properties, thereby quickly escaping the prophylactic scope of existing vaccines. Custom made vaccine concepts offer the possibility to quickly react to these changes by using most actual isolates from the target farm starting with the next batch.



CUSTOM MADE VACCINES

Tailor made protection for your calves, veal calves, fatteners, heifers and cows

Polyvalent products: Combinations are possible

Adjuvants: Aluminiumhydroxide, Mineral Oil

Volume per Dose: by individual order

Bottle sizes: 100 ml, 300 ml or 500 ml

Our list of products includes vaccines for cattle against the following antigens:

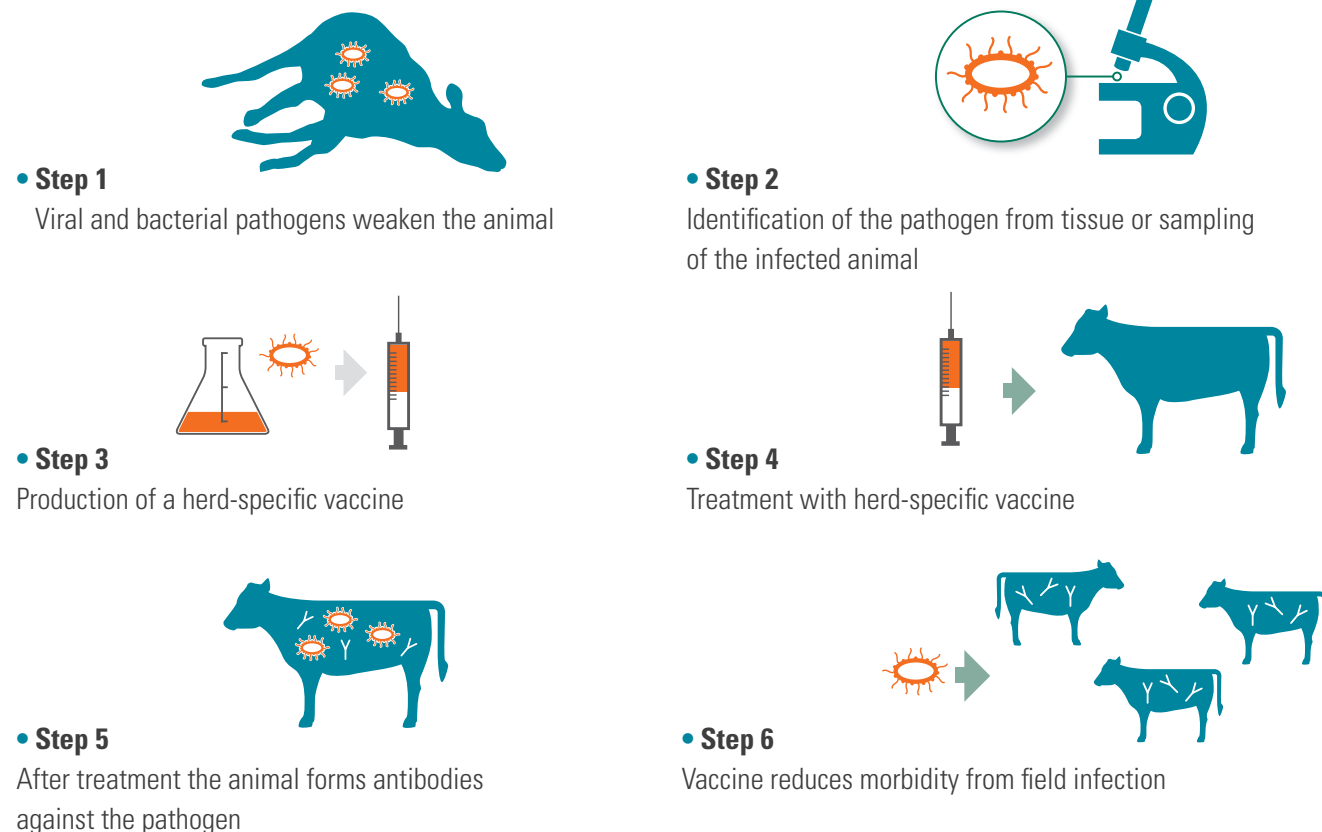
Bacterial Antigens incl. Mycoplasma

- Clostridium difficile
- Clostridium perfringens
- Clostridium sordellii
- Escherichia coli
- Haemophilus
- Histophilus somni
- Mannheimia
- Moraxella
- Mycoplasma bovirhinis
- Mycoplasma bovis
- Mycoplasma spp.
- Pasteurella
- Pseudomonas
- Salmonella
- Staphylococcus
- Streptococcus
- Trueperella pyogenes

Viral Antigens

- Influenza D

PRODUCTION PROCESS



For more information please contact our cattle veterinarians:

Dr. Carina Helmer

Phone: +49 44 73 - 94 38 798

E-Mail: helmer@anicon.eu

Henning Lindhaus

Phone: +49 44 73 - 94 38 792

E-Mail: lindhaus@anicon.eu